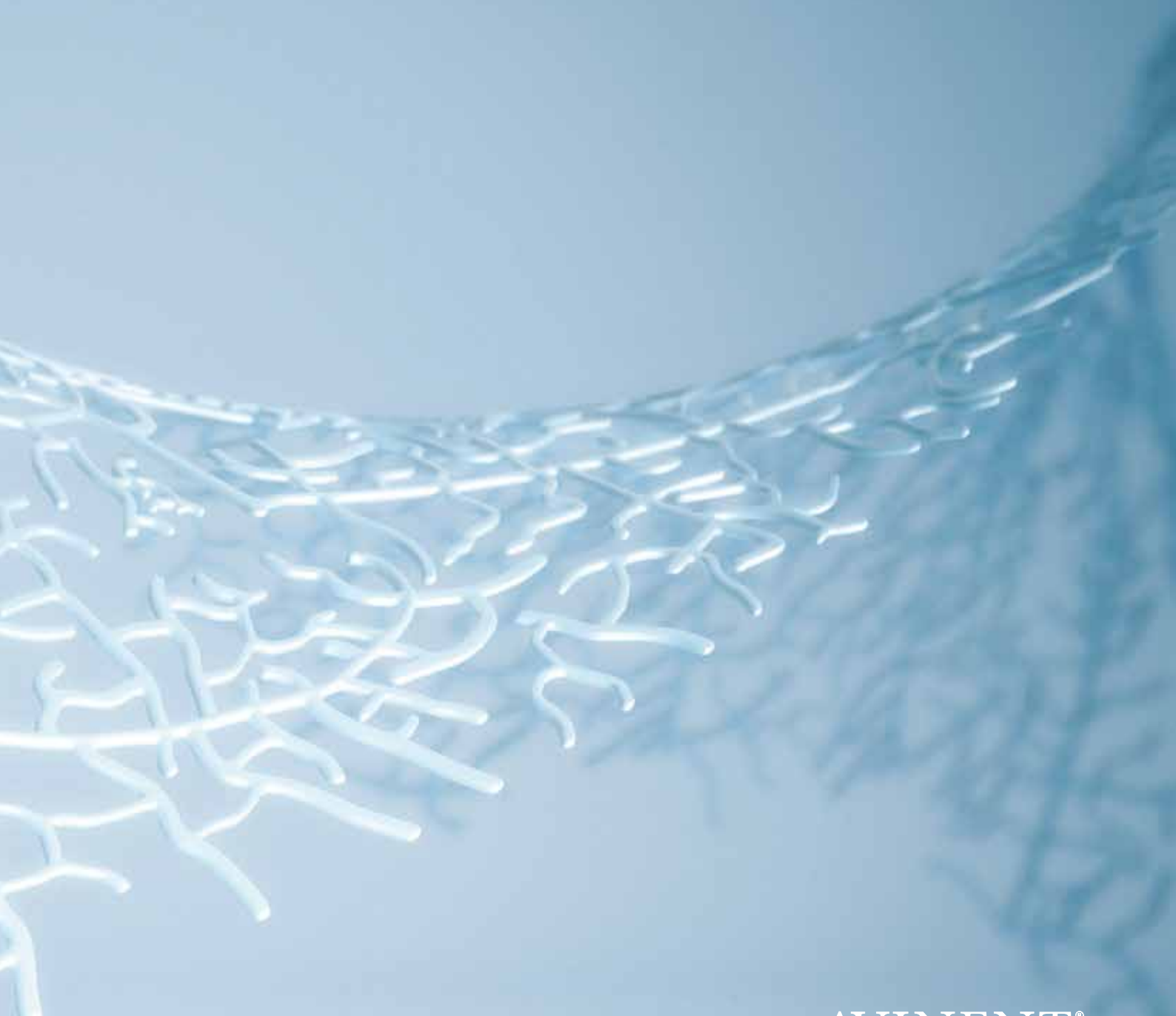


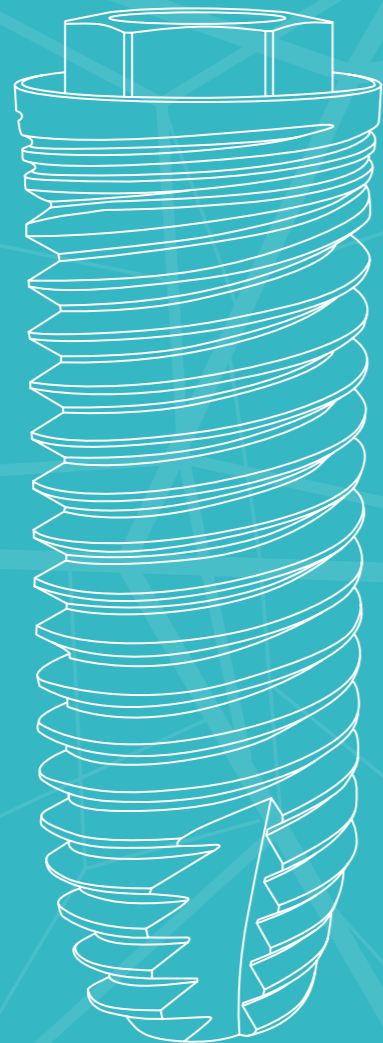
Biomimetic

CORAL

Product catalogue



AVINENT®
Implant System



CORAL is the first implant system developed by AVINENT and came about as a result of intensive research in the fields of biomedicine and materials engineering.

CORAL implants have proven their outstanding predictability and supreme reliability during the years they have been present on the market. Their remarkable shape and innovative Biomimetic surface give excellent aesthetic results.

Contents




Surgical phase	4
EC External connection	4
IC Internal connection	6
Accessories	8
Instruments and surgical kit	10
Drilling speed	11
Drill-bit length and marking	11
AVINENT drilling protocol	12
Sterilization and packaging	14
AVINENT Guide Surgery	16
Surgical motors	16
Radiographic template	16
Product index	17

Biomimetic CORAL



EC EXTERNAL CONNECTION

Surgical phase





	Platform Ø 3,5 mm		Platform Ø 4,1 mm						Platform Ø 5,1 mm					
	Ø 3,3 mm	Ref.	Ø 3,3 mm	Ref.	Ø 3,8 mm	Ref.	Ø 4,0 mm	Ref.	Ø 4,2 mm	Ref.	Ø 4,8 mm	Ref.		
Implant														
	-	-	-	-	3,8 x 7 mm	0836	4,0 x 7 mm	0837	4,2 x 7 mm	0838	4,8 x 7 mm	0840	4,8 x 7 mm	0839
	-	-	-	-	3,8 x 8,5 mm	0122	4,0 x 8,5 mm	0129	4,2 x 8,5 mm	0133	4,8 x 8,5 mm	0560	4,8 x 8,5 mm	0138
	3,3 x 10 mm	0123	3,3 x 10 mm	0184	3,8 x 10 mm	0121	4,0 x 10 mm	0130	4,2 x 10 mm	0134	4,8 x 10 mm	0561	4,8 x 10 mm	0139
	3,3 x 11,5 mm	0124	3,3 x 11,5 mm	0185	3,8 x 11,5 mm	0126	4,0 x 11,5 mm	0001	4,2 x 11,5 mm	0135	4,8 x 11,5 mm	0562	4,8 x 11,5 mm	0140
	3,3 x 13 mm	0125	3,3 x 13 mm	0186	3,8 x 13 mm	0127	4,0 x 13 mm	0131	4,2 x 13 mm	0136	4,8 x 13 mm	0563	4,8 x 13 mm	0141
	-	-	3,3 x 15 mm	0187	3,8 x 15 mm	0128	4,0 x 15 mm	0132	4,2 x 15 mm	0137	-	-	-	-
Healing abutment														
	4 x 3 mm	0030	4 x 3 mm	3363	4 x 3 mm	3363	4 x 3 mm	3363	4 x 3 mm	3363	4 x 3 mm	3363	6 x 3 mm	0039
	4 x 4 mm	0031	4 x 5 mm	3364	4 x 5 mm	3364	4 x 5 mm	3364	4 x 5 mm	3364	4 x 5 mm	3364	6 x 4 mm	0040
	4 x 5 mm	0032	4 x 7 mm	3365	4 x 7 mm	3365	4 x 7 mm	3365	4 x 7 mm	3365	4 x 7 mm	3365	6 x 5 mm	0041
	5 x 3 mm	0033	5 x 3 mm	0036	5 x 3 mm	0036	5 x 3 mm	0036	5 x 3 mm	0036	5 x 3 mm	0036	-	-
	5 x 4 mm	0034	5 x 4 mm	0037	5 x 4 mm	0037	5 x 4 mm	0037	5 x 4 mm	0037	5 x 4 mm	0037	-	-
	5 x 5 mm	0035	5 x 5 mm	0003	5 x 5 mm	0003	5 x 5 mm	0003	5 x 5 mm	0003	5 x 5 mm	0003	-	-
	-	-	5 x 7 mm	0038	5 x 7 mm	0038	5 x 7 mm	0038	5 x 7 mm	0038	5 x 7 mm	0038	-	-
Anatomic healing abutment														
	5 x 3 mm	0171	5 x 3 mm	0174	5 x 3 mm	0174	5 x 3 mm	0174	5 x 3 mm	0174	5 x 3 mm	0174	6 x 3 mm	0178
	5 x 4 mm	0172	5 x 4 mm	0175	5 x 4 mm	0175	5 x 4 mm	0175	5 x 4 mm	0175	5 x 4 mm	0175	6 x 4 mm	0179
	5 x 5 mm	0173	5 x 5 mm	0176	5 x 5 mm	0176	5 x 5 mm	0176	5 x 5 mm	0176	5 x 5 mm	0176	6 x 5 mm	0180
	-	-	5 x 7 mm	0177	5 x 7 mm	0177	5 x 7 mm	0177	5 x 7 mm	0177	5 x 7 mm	0177	-	-
Anatomic healing abutment PEEK														
	-	-	6 x 5 mm	3366	6 x 5 mm	3366	6 x 5 mm	3366	6 x 5 mm	3366	6 x 5 mm	3366	6 x 5 mm	3368
	-	-	8 x 5 mm	3367	8 x 5 mm	3367	8 x 5 mm	3367	8 x 5 mm	3367	8 x 5 mm	3367	8 x 5 mm	3369

Biomimetic CORAL



IC INTERNAL CONNECTION

Surgical phase

	Platform Ø 3,5 mm		Platform Ø 4,1 mm									
	Ø 3,3 mm	Ref.	Ø 3,3 mm	Ref.	Ø 3,8 mm	Ref.	Ø 4,0 mm	Ref.	Ø 4,2 mm	Ref.	Ø 4,8 mm	Ref.
Implant												
	-	-	-	-	3,8 x 7 mm	0841	4,0 x 7 mm	0842	4,2 x 7 mm	0843	4,8 x 7 mm	0844
	-	-	-	-	3,8 x 8,5 mm	0389	4,0 x 8,5 mm	0394	4,2 x 8,5 mm	0399	4,8 x 8,5 mm	0404
	3,3 x 10 mm	0385	3,3 x 10 mm	0408	3,8 x 10 mm	0390	4,0 x 10 mm	0395	4,2 x 10 mm	0400	4,8 x 10 mm	0405
	3,3 x 11,5 mm	0386	3,3 x 11,5 mm	0409	3,8 x 11,5 mm	0391	4,0 x 11,5 mm	0396	4,2 x 11,5 mm	0401	4,8 x 11,5 mm	0406
	3,3 x 13 mm	0387	3,3 x 13 mm	0410	3,8 x 13 mm	0392	4,0 x 13 mm	0397	4,2 x 13 mm	0402	4,8 x 13 mm	0407
	3,3 x 15 mm	0388	3,3 x 15 mm	0411	3,8 x 15 mm	0393	4,0 x 15 mm	0398	4,2 x 15 mm	0403	-	-
Anatomic healing abutment												
	3,5 x 3 mm	3370	3,5 x 3 mm	3370	3,5 x 3 mm	3370	3,5 x 3 mm	3370	3,5 x 3 mm	3370	3,5 x 3 mm	3370
	3,5 x 5 mm	3371	3,5 x 5 mm	3371	3,5 x 5 mm	3371	3,5 x 5 mm	3371	3,5 x 5 mm	3371	3,5 x 5 mm	3371
	3,5 x 7 mm	3372	3,5 x 7 mm	3372	3,5 x 7 mm	3372	3,5 x 7 mm	3372	3,5 x 7 mm	3372	3,5 x 7 mm	3372
	4,5 x 2 mm	0465	4,5 x 2 mm	0465	4,5 x 2 mm	0465	4,5 x 2 mm	0465	4,5 x 2 mm	0465	4,5 x 2 mm	0465
	4,5 x 3 mm	0466	4,5 x 3 mm	0466	4,5 x 3 mm	0466	4,5 x 3 mm	0466	4,5 x 3 mm	0466	4,5 x 3 mm	0466
	4,5 x 4 mm	0467	4,5 x 4 mm	0467	4,5 x 4 mm	0467	4,5 x 4 mm	0467	4,5 x 4 mm	0467	4,5 x 4 mm	0467
	4,5 x 5 mm	0468	4,5 x 5 mm	0468	4,5 x 5 mm	0468	4,5 x 5 mm	0468	4,5 x 5 mm	0468	4,5 x 5 mm	0468
	4,5 x 7 mm	0469	4,5 x 7 mm	0469	4,5 x 7 mm	0469	4,5 x 7 mm	0469	4,5 x 7 mm	0469	4,5 x 7 mm	0469
	5,5 x 3 mm	0471	5,5 x 3 mm	0471	5,5 x 3 mm	0471	5,5 x 3 mm	0471	5,5 x 3 mm	0471	5,5 x 3 mm	0471
	5,5 x 4 mm	0472	5,5 x 4 mm	0472	5,5 x 4 mm	0472	5,5 x 4 mm	0472	5,5 x 4 mm	0472	5,5 x 4 mm	0472
	5,5 x 5 mm	0473	5,5 x 5 mm	0473	5,5 x 5 mm	0473	5,5 x 5 mm	0473	5,5 x 5 mm	0473	5,5 x 5 mm	0473
	5,5 x 7 mm	0474	5,5 x 7 mm	0474	5,5 x 7 mm	0474	5,5 x 7 mm	0474	5,5 x 7 mm	0474	5,5 x 7 mm	0474
	6,5 x 3 mm	2737	6,5 x 3 mm	2737	6,5 x 3 mm	2737	6,5 x 3 mm	2737	6,5 x 3 mm	2737	6,5 x 3 mm	2737
	6,5 x 4 mm	2727	6,5 x 4 mm	2727	6,5 x 4 mm	2727	6,5 x 4 mm	2727	6,5 x 4 mm	2727	6,5 x 4 mm	2727
	6,5 x 5 mm	2726	6,5 x 5 mm	2726	6,5 x 5 mm	2726	6,5 x 5 mm	2726	6,5 x 5 mm	2726	6,5 x 5 mm	2726
Aesthetic healing abutment												
	4,5 x 2 mm	0607	4,5 x 2 mm	0607	4,5 x 2 mm	0607	4,5 x 2 mm	0607	4,5 x 2 mm	0607	4,5 x 2 mm	0607
	4,5 x 3 mm	0608	4,5 x 3 mm	0608	4,5 x 3 mm	0608	4,5 x 3 mm	0608	4,5 x 3 mm	0608	4,5 x 3 mm	0608
	4,5 x 4 mm	0609	4,5 x 4 mm	0609	4,5 x 4 mm	0609	4,5 x 4 mm	0609	4,5 x 4 mm	0609	4,5 x 4 mm	0609
	4,5 x 5 mm	0610	4,5 x 5 mm	0610	4,5 x 5 mm	0610	4,5 x 5 mm	0610	4,5 x 5 mm	0610	4,5 x 5 mm	0610
	4,5 x 6 mm	0611	4,5 x 6 mm	0611	4,5 x 6 mm	0611	4,5 x 6 mm	0611	4,5 x 6 mm	0611	4,5 x 6 mm	0611
	4,5 x 7 mm	0612	4,5 x 7 mm	0612	4,5 x 7 mm	0612	4,5 x 7 mm	0612	4,5 x 7 mm	0612	4,5 x 7 mm	0612
Anatomic healing abutment PEEK												
	6 x 5 mm	3373	6 x 5 mm	3373	6 x 5 mm	3373	6 x 5 mm	3373	6 x 5 mm	3373	6 x 5 mm	3373
	8 x 5 mm	3481	8 x 5 mm	3481	8 x 5 mm	3481	8 x 5 mm	3481	8 x 5 mm	3481	8 x 5 mm	3481

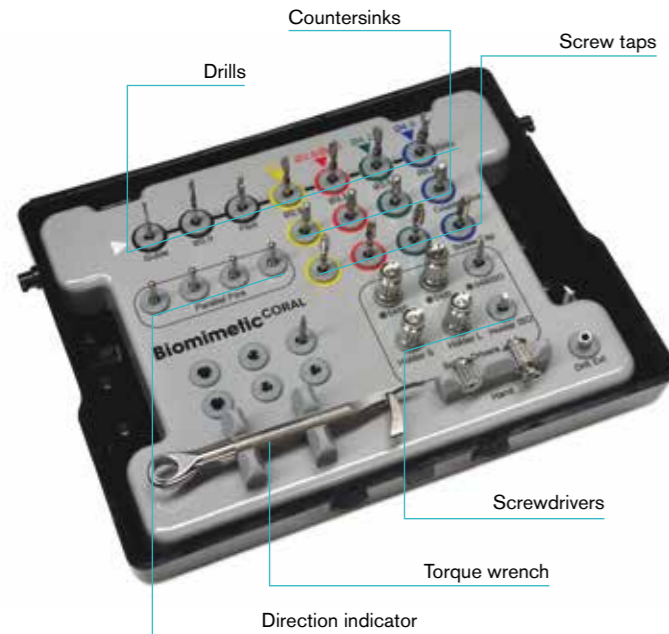
Accessories

	Ref.
Sterilization cassette CORAL	0296
Sterilization cassette 3x6"	0526
Radel plate 3x6"	0527
Surgical motor Bien-Air	-
Surgical motor W&H	-
Torque wrench	0295
Holding tool EC/IC	0651
Implant depth gauge	0652
Screwdrivers	
Screwdriver ISO 1797 (035)	0082
Screwdriver ISO 1797 S (048)	0644
Screwdriver ISO 1797 L (048)	0277
Screwdriver ISO 1797 XL (048)	0645
Implant driver ISO 1797 EC/IC S (2.5)	2693
Implant driver ISO 1797 EC/IC L (2.5)	0300
Implant driver ISO 1797 W&H EC/IC (2.5)	2692
Screwdriver gold screw ISO 1797	0263
Screwdriver Rhein 83 abutment	
Screwdriver grooved screw ISO 1797	0267
Screwdriver impression coping closed tray ISO 1797	0723
Screwdriver transepithelial abutment ISO 1797 S	0328
Screwdriver transepithelial abutment ISO 1797 L	0726
Screwdriver transepithelial angled abutment ISO 1797 S	0804
Screwdriver transepithelial angled abutment ISO 1797 L	0648
Screwdriver handle	
Handle ISO 1797 S	0791
Handle ISO 1797 L	0790

Implant handle	Implant handle S	1878
	Implant handle L	2891
Monoblock screwdrivers	Screwdriver S (048)	0274
	Screwdriver L (048)	0275
	Implant driver S (2.5)	0278
	Implant driver L (2.5)	0299
Drills	Guide drill	0088
	Pointed drill	0188
	Pilot drill	2,0 - 2,8 mm 0094
	Twist drill	2,0 x 7 - 15 mm 0089
		2,8 x 7 - 15 mm 0090
		3,2 x 7 - 15 mm 0091
		3,6 x 7 - 15 mm 0092
		4,2 x 7 - 13 mm 0093
	Short twist drill	2,0 x 7 - 10 mm 0868
		2,8 x 7 - 10 mm 0869
		3,2 x 7 - 10 mm 0870
		3,6 x 7 - 10 mm 0871
		4,2 x 7 - 10 mm 0872
	Hard bone twist drill	3,4 x 7 - 15 mm 0873
		3,9 x 7 - 15 mm 0888
		4,5 x 7 - 13 mm 0889
Countersink	3,3 mm	0095
	3,8 mm	0096
	4,0 mm	0096
	4,2 mm	0097
	4,8 mm	0098
Screw tap	3,3 mm	0099
	3,8 mm	0100
	4,0 mm	0100
	4,2 mm	0101
	4,8 mm	0102
Drill stop	2,0 mm	0022
	2,8 mm	0023
	3,2 mm	0024
	3,6 mm	0025
	4,2 mm	0026
Direction indicator	1,9 - 2,7 mm	0021
Drill extension ISO 1797		0655

Instruments and surgical kit

AVINENT supplies high-precision instruments designed specifically for inserting implants and suitable for use with internal and external connections. AVINENT's two surgical boxes allow practitioners to choose the working system that best meets their needs.



The sterilization cassette **CORAL** stands out for its clear layout and attractive design, making it easy to use. The drilling sequence is clearly indicated by means of a simple colour code according to the diameter of the selected implant. All the pieces are placed in a sterilizable tray with a seethrough lid, giving a clear view of the interior.

The sterilization cassette **3x6"** is versatile, as it allows practitioners to select a specific sequence and take everything required for the surgical procedure with them in a small container. The box is sterilizable and can hold all the items needed for inserting implants.



Advisable torque

Abutment screw	35 Ncm
Gold screw	35 Ncm
Transepithelial abutment	35 Ncm
Transepithelial angled abutment	20 Ncm
Transepithelial screw	20 Ncm
Overdenture abutment	20 Ncm
Scan abutment	Manual
Healing abutment PEEK	Manual
Temporary abutment PEEK	Manual
Cover screw	Manual

* For any additional information and instrument maintenance instructions, please check www.avinent.com

Drilling speed

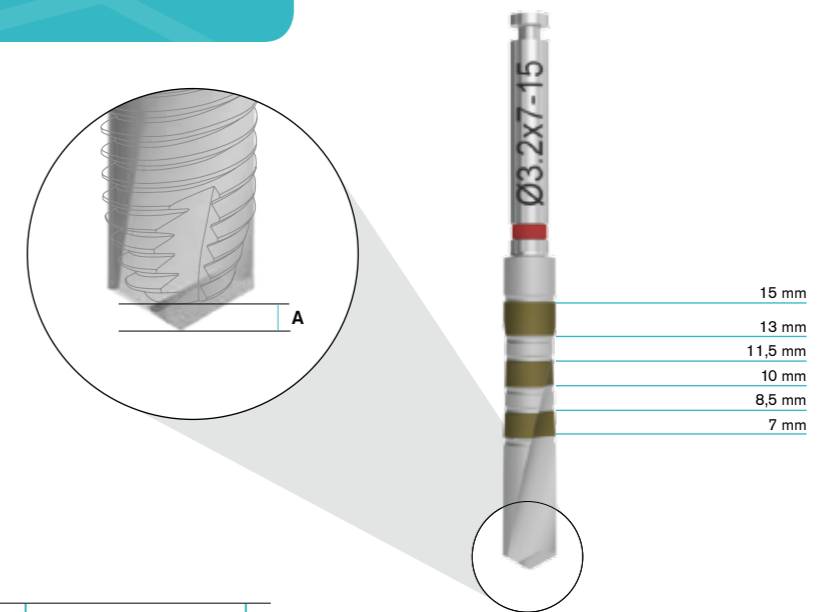
	rpm
Guide drill	800 - 1.200
Drill ø 2 mm	800 - 1.200
Pilot drill	600 - 800
Drill ø 2,8 mm	400 - 600
Drill ø 3,2 mm	200 - 400
Drill ø 3,4 mm	200 - 400
Drill ø 3,6 mm	200 - 400
Drill ø 3,9 mm	200 - 400
Drill ø 4,2 mm	200 - 400
Drill ø 4,5 mm	200 - 400
Countersink	150
Screw Tap	20

Maximum recommended torque for implant insertion:
45-50 Ncm

Maximum recommended speed for implant insertion:
20 rpm

Drill-bit length and marking

AVINENT drills carry physical and laser markings to improve visibility during osteotomy, and follow a colour code according to the diameter of the implant. A two-part distinctive mark indicates those drill bits which are for hard bone. The marking corresponds to the length of the implant in crestal placement, but the distances are not absolute from the tip of the instrument to the mark. The length of the drill tip is not included in the depth mark, and so this distance must be taken into account when planning treatment and in carrying out the osteotomy.



DRILL	A
ø 2,8 mm	0,58 mm
ø 3,2 mm	0,82 mm
ø 3,6 mm	0,89 mm
ø 4,2 mm	0,89 mm

AVINENT drilling protocol

The AVINENT drilling protocol for inserting CORAL system implants is based on the anatomical and morphological characteristics of the bone to be worked on, the aim being to achieve satisfactory primary stability and a good bone-implant contact percentage, key factors for good osseointegration. The diameter of the helicoidal drills in the system is related to the

core of the implant to be inserted. Hence it is advisable to use the system's drilling sequence and instruments. The matt finish of the drills makes it easier to locate the marks that indicate length during surgery. Due to the fact that the surface treatment of the AVINENT implant extends to the level of the platform, it is advisable to leave the implant at juxta-bone level.

* All drills should only be used for a maximum of ten times.

** Hard bone drills are identified with two color indicators.

Implant ø 3,3 mm

Ref.	0188/0088	0089	0094	0090	0095	0099	
	Guide drill	Drill ø 2 mm	Pilot drill ø 2,0 - 2,8	Drill ø 2,8 mm	Countersink	Screw tap	Implant
	BONE TYPE III-IV				BONE TYPE I-II		

Implant ø 4,2 mm

Ref.	0188/0088	0089	0094	0090	0091	0092	0888	0097	0101	
	Guide drill	Drill ø 2 mm	Pilot drill ø 2,0 - 2,8	Drill ø 2,8 mm	Drill ø 3,2 mm	Drill ø 3,6 mm	Drill ø 3,9 mm	Countersink	Screw tap	Implant
	BONE TYPE III-IV						Option 1	Option 2		
	BONE TYPE I-II									

Implant ø 3,8/4,0 mm

Ref.	0188/0088	0089	0094	0090	0091	0873	0096	0100	
	Guide drill	Drill ø 2 mm	Pilot drill ø 2,0 - 2,8	Drill ø 2,8 mm	Drill ø 3,2 mm	Drill ø 3,4 mm	Countersink	Screw tap	Implant
	BONE TYPE III-IV				Option 1	Option 2			
	BONE TYPE I-II								

Implant ø 4,8 mm

Ref.	0188/0088	0089	0094	0090	0091	0092	0093	0889	0098	0102	
	Guide drill	Drill ø 2 mm	Pilot drill ø 2,0 - 2,8	Drill ø 2,8 mm	Drill ø 3,2 mm	Drill ø 3,6 mm	Drill ø 4,2 mm	Drill ø 4,5 mm	Countersink	Screw tap	Implant
	BONE TYPE III-IV						Option 1	Option 2			
	BONE TYPE I-II										

Sterilization and packaging



IC



EC

AVINENT implants are subjected to a sterilization process in accordance with the requirements of the CE mark for medical device. AVINENT supplies its implants in packaging that is easily identified by a simple colour code.

The vial cap comes in different colours according to the diameter of the implant and has a sticker indicating the type of connection and the diameter and length of the implant.

The AVINENT implant system is sold in a sterile blister pack, which ensures that the implant is fully protected until the given expiry date, so long as it is stored in suitable conditions.

AVINENT supplies labeling with all its products that ensure every item can be properly traced by means of stickers that can be used in the patient's clinical history or in any other documentation required.

Opening the packaging

Open the box and take out the blister pack.

Open the blister pack and leave the vial containing the implant in the sterile working area, avoiding contact with any item that is not sterile. The sterile blister pack must not be opened prior to use.

Open the vial by gripping the coloured cap with one hand while holding the transparent part in the other.

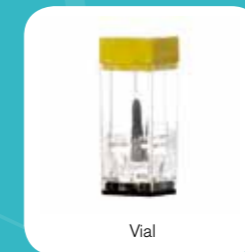
Fit the implant driver (manual or hand piece) into the implant holder.

Press to make a tight fit and raise the implant set slightly.

Open the black cap on the bottom of the vial to remove the cover screw.



Blister pack (front and back)



Vial



Opening the vial



Opened vial

Information on the box

Rx only

CE 0197 **Biomimetic** CORAL

Manufacturer: AVINENT Implant System S.L. Pol. Ind. Santa Anna I, E08251 Santpedor (Barcelona) Spain. **STERILE R** Do not reuse Consult instructions for use

Implant box label

Implant EC
ø 3.3 x 10 (3.5)
REF 0123

ES Implante
PT Implante
FR Implant

XXXXX

YYYY-MM

Labels that make the product traceable

AVINENT
Implant EC
REF 0123 XXXXX
 YYYY-MM

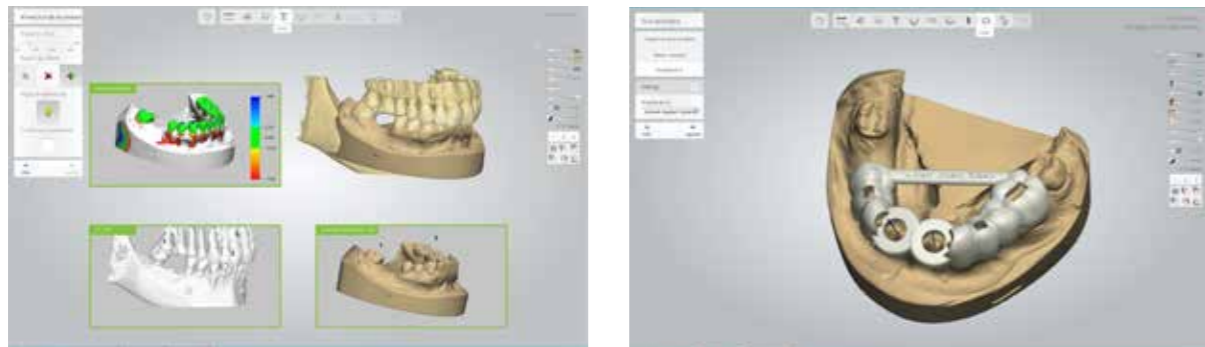
AVINENT
Implant EC
REF 0123 XXXXX
 YYYY-MM

AVINENT
Implant EC
REF 0123 XXXXX
 YYYY-MM

AVINENT
Purchasing / Compra
REF 0123
 XXXXX

Implant EC/IC	External/internal connection indicator
ø 3.3 x 10 (3.5)	Diameter x length (implant holder)
REF 0123	Reference number
XXXXX	Batch code
YYYY-MM	Expiry date
	Sterile. Sterilization method: radiation
	Do not re-use
	Consult instructions for use
	Manufacturer
CE 0197	CE Mark NB num 0197. TÜV Rheinland
Rx only	(For the USA only) CAUTION: Federal law restricts this device to sale by or on the order of a physician

AVINENT Guided Surgery



AVINENT Guided Surgery

- Implant Studio (implant planning and guided surgery)
- Simplant (implant planning)
- Dental Wings (implant planning)

CT or CBCT Scanners. Available libraries for:

- NewTom
- Carestream
- (More coming soon)

Radiographic template

The radiographic template is a guide to help practitioners precisely select the appropriate implant diameter and length.

To adapt it to the proportions of the x-ray, the dimensions of the implant are shown at a scale 1:1 and 1.25:1.



Surgical motors

The **Bien-Air iChiropro** is a multipurpose console designed for many clinical applications. Intended to simplify everyday work and for multiple users, its intuitive system can be adapted to suit each practitioner's needs by allowing the entire drilling sequence to be customized.

The **W&H Implantmed** gives implantology specialists a surgical unit for everyday use in safely carrying out oral procedures. The drive unit can be employed for any kind of manual surgery and any contra-angle with ISO connection.



Product index

Ref.	Description	Page	Ref.	Description	Page
0001	Implant EC 4,0 x 11,5 (4,1)	5	0132	Implant EC 4,0 x 15 (4,1)	5
0003	Healing abutment EC 4,1 x 5 x 5	4, 5	0133	Implant EC 4,2 x 8,5 (4,1)	5
0021	Direction indicator ø 1,9 - ø 2,7	9	0134	Implant EC 4,2 x 10 (4,1)	5
0022	Drill stop ø 2,0	9	0135	Implant EC 4,2 x 11,5 (4,1)	5
0023	Drill stop ø 2,8	9	0136	Implant EC 4,2 x 13 (4,1)	5
0024	Drill stop ø 3,2	9	0137	Implant EC 4,2 x 15 (4,1)	5
0025	Drill stop ø 3,6	9	0138	Implant EC 4,8 x 8,5 (5,1)	5
0026	Drill stop ø 4,2	9	0139	Implant EC 4,8 x 10 (5,1)	5
0030	Healing abutment EC 3,5 x 4 x 3	4	0140	Implant EC 4,8 x 11,5 (5,1)	5
0031	Healing abutment EC 3,5 x 4 x 4	4	0141	Implant EC 4,8 x 13 (5,1)	5
0032	Healing abutment EC 3,5 x 4 x 5	4	0171	Anatomic healing abutment EC 3,5 x 5 x 3	4
0033	Healing abutment EC 3,5 x 5 x 3	4	0172	Anatomic healing abutment EC 3,5 x 5 x 4	4
0034	Healing abutment EC 3,5 x 5 x 4	4	0173	Anatomic healing abutment EC 3,5 x 5 x 5	4
0035	Healing abutment EC 3,5 x 5 x 5	4	0174	Anatomic healing abutment EC 4,1 x 5 x 3	4, 5
0036	Healing abutment EC 4,1 x 5 x 3	4, 5	0175	Anatomic healing abutment EC 4,1 x 5 x 4	4, 5
0037	Healing abutment EC 4,1 x 5 x 4	4, 5	0176	Anatomic healing abutment EC 4,1 x 5 x 5	4, 5
0038	Healing abutment EC 4,1 x 5 x 7	4, 5	0177	Anatomic healing abutment EC 4,1 x 5 x 7	4, 5
0039	Healing abutment EC 5,1 x 6 x 3	5	0178	Anatomic healing abutment EC 5,1 x 6 x 3	5
0040	Healing abutment EC 5,1 x 6 x 4	5	0179	Anatomic healing abutment EC 5,1 x 6 x 4	5
0041	Healing abutment EC 5,1 x 6 x 5	5	0180	Anatomic healing abutment EC 5,1 x 6 x 5	5
0082	Screwdriver ISO 1797 (035)	8	0184	Implant EC 3,3 x 10 (4,1)	4
0088	Guide drill ø 2,0 x 25	9	0185	Implant EC 3,3 x 11,5 (4,1)	4
0089	Twist drill ø 2,0 x 7,0 - 15	9	0186	Implant EC 3,3 x 13 (4,1)	4
0090	Twist drill ø 2,8 x 7,0 - 15	9	0187	Implant EC 3,3 x 15 (4,1)	4
0091	Twist drill ø 3,2 x 7,0 - 15	9	0188	Pointed drill	9
0092	Twist drill ø 3,6 x 7,0 - 15	9	0263	Screwdriver gold screw ISO 1797 Screwdriver Rhein 83 abutment	8
0093	Twist drill ø 4,2 x 7,0 - 13	9	0267	Screwdriver grooved screw ISO 1797	8
0094	Pilot drill ø 2,0 - ø 2,8 x 7	9	0274	Screwdriver S (048)	9
0095	Countersink 3,3	9	0275	Screwdriver L (048)	9
0096	Countersink 3,8 - 4,0	9	0277	Screwdriver ISO 1797 L (048)	8
0097	Countersink 4,2	9	0278	Implant driver S (2,5)	9
0098	Countersink 4,8	9	0295	Torque wrench	8
0099	Screw tap 3,3	9	0296	Sterilization cassette CORAL	8
0100	Screw tap 3,8 - 4,0	9	0299	Implant driver L (2,5)	9
0101	Screw tap 4,2	9	0300	Implant driver ISO 1797 EC/IC L (2,5)	8
0102	Screw tap 4,8	9	0328	Screwdriver transepithelial abutment ISO 1797 S	8
0121	Implant EC 3,8 x 10 (4,1)	4	0385	Implant IC 3,3 x 10 (3,5)	6
0122	Implant EC 3,8 x 8,5 (4,1)	4	0386	Implant IC 3,3 x 11,5 (3,5)	6
0123	Implant EC 3,3 x 10 (3,5)	4	0387	Implant IC 3,3 x 13 (3,5)	6
0124	Implant EC 3,3 x 11,5 (3,5)	4	0388	Implant IC 3,3 x 15 (3,5)	6
0125	Implant EC 3,3 x 13 (3,5)	4	0389	Implant IC 3,8 x 8,5 (4,1)	7
0126	Implant EC 3,8 x 11,5 (4,1)	4	0390	Implant IC 3,8 x 10 (4,1)	7
0127	Implant EC 3,8 x 13 (4,1)	4	0391	Implant IC 3,8 x 11,5 (4,1)	7
0128	Implant EC 3,8 x 15 (4,1)	4	0392	Implant IC 3,8 x 13 (4,1)	7
0129	Implant EC 4,0 x 8,5 (4,1)	5	0393	Implant IC 3,8 x 15 (4,1)	7
0130	Implant EC 4,0 x 10 (4,1)	5	0394	Implant IC 4,0 x 8,5 (4,1)	7
0131	Implant EC 4,0 x 13 (4,1)	5			

Ref.	Description	Page
0395	Implant IC 4,0 x 10 (4,1)	7
0396	Implant IC 4,0 x 11,5 (4,1)	7
0397	Implant IC 4,0 x 13 (4,1)	7
0398	Implant IC 4,0 x 15 (4,1)	7
0399	Implant IC 4,2 x 8,5 (4,1)	7
0400	Implant IC 4,2 x 10 (4,1)	7
0401	Implant IC 4,2 x 11,5 (4,1)	7
0402	Implant IC 4,2 x 13 (4,1)	7
0403	Implant IC 4,2 x 15 (4,1)	7
0404	Implant IC 4,8 x 8,5 (4,1)	7
0405	Implant IC 4,8 x 10 (4,1)	7
0406	Implant IC 4,8 x 11,5 (4,1)	7
0407	Implant IC 4,8 x 13 (4,1)	7
0408	Implant IC 3,3 x 10 (4,1)	6
0409	Implant IC 3,3 x 11,5 (4,1)	6
0410	Implant IC 3,3 x 13 (4,1)	6
0411	Implant IC 3,3 x 15 (4,1)	6
0465	Anatomic healing abutment IC 3,5/4,1 x 4,5 x 2	6, 7
0466	Anatomic healing abutment IC 3,5/4,1 x 4,5 x 3	6, 7
0467	Anatomic healing abutment IC 3,5/4,1 x 4,5 x 4	6, 7
0468	Anatomic healing abutment IC 3,5/4,1 x 4,5 x 5	6, 7
0469	Anatomic healing abutment IC 3,5/4,1 x 4,5 x 7	6, 7
0471	Anatomic healing abutment IC 3,5/4,1 x 5,5 x 3	6, 7
0472	Anatomic healing abutment IC 3,5/4,1 x 5,5 x 4	6, 7
0473	Anatomic healing abutment IC 3,5/4,1 x 5,5 x 5	6, 7
0474	Anatomic healing abutment IC 3,5/4,1 x 5,5 x 7	6, 7
0526	Sterilization cassette 3x6"	8
0527	Radel plate 3x6"	8
0560	Implant EC 4,8 x 8,5 (4,1)	5
0561	Implant EC 4,8 x 10 (4,1)	5
0562	Implant EC 4,8 x 11,5 (4,1)	5
0563	Implant EC 4,8 x 13 (4,1)	5
0607	Aesthetic healing abutment IC 4,5 x 2	6, 7
0608	Aesthetic healing abutment IC 4,5 x 3	6, 7
0609	Aesthetic healing abutment IC 4,5 x 4	6, 7
0610	Aesthetic healing abutment IC 4,5 x 5	6, 7
0611	Aesthetic healing abutment IC 4,5 x 6	6, 7
0612	Aesthetic healing abutment IC 4,5 x 7	6, 7
0644	Screwdriver S ISO 1797 (048)	8
0645	Screwdriver XL ISO 1797 (048)	8
0648	Screwdriver transepithelial angled abutment ISO 1797 L	8
0651	Holding tool EC/IC	8
0652	Implant depth gauge	8
0655	Drill extension ISO 1797	9
0723	Screwdriver coping closed tray ISO 1797	8
0726	Screwdriver transepithelial abutment ISO 1797 L	8

Ref.	Description	Page
0790	Handle L ISO 1797	8
0791	Handle S ISO 1797	8
0804	Screwdriver transepithelial angled abutment ISO 1797 S	8
0836	Implant EC 3,8 x 7 (4,1)	4
0837	Implant EC 4,0 x 7 (4,1)	5
0838	Implant EC 4,2 x 7 (4,1)	5
0839	Implant EC 4,8 x 7 (5,1)	5
0840	Implant EC 4,8 x 7 (4,1)	5
0841	Implant IC 3,8 x 7 (4,1)	7
0842	Implant IC 4,0 x 7 (4,1)	7
0843	Implant IC 4,2 x 7 (4,1)	7
0844	Implant IC 4,8 x 7 (4,1)	7
0868	Twist drill ø 2,0 x 7,0 - 10	9
0869	Twist drill ø 2,8 x 7,0 - 10	9
0870	Twist drill ø 3,2 x 7,0 - 10	9
0871	Twist drill ø 3,6 x 7,0 - 10	9
0872	Twist drill ø 4,2 x 7,0 - 10	9
0873	Twist drill ø 3,4 x 7,0 - 15	9
0888	Twist drill ø 3,9 x 7,0 - 15	9
0889	Twist drill ø 4,5 x 7,0 - 15	9
1878	Implant handle S	9
2692	Implant driver ISO 1797 W&H EC/IC (2,5)	8
2693	Implant driver ISO 1797 EC/IC S (2,5)	8
2726	Anatomic healing abutment IC 3,5/4,1 x 6,5 x 5	6, 7
2727	Anatomic healing abutment IC 3,5/4,1 x 6,5 x 4	6, 7
2737	Anatomic healing abutment IC 3,5/4,1 x 6,5 x 3	6, 7
2891	Implant handle L	9
3363	Healing abutment EC 4,1 x 4 x 3	4
3364	Healing abutment EC 4,1 x 4 x 5	4
3365	Healing abutment EC 4,1 x 4 x 7	4
3366	Anatomic healing abutment PEEK EC 4,1 x 6 x 5	4, 5
3367	Anatomic healing abutment PEEK EC 4,1 x 8 x 5	4, 5
3368	Anatomic healing abutment PEEK EC 5,1 x 6 x 5	5
3369	Anatomic healing abutment PEEK EC 5,1 x 8 x 5	5
3370	Anatomic healing abutment IC 3,5/4,1 x 3,5 x 3	6, 7
3371	Anatomic healing abutment IC 3,5/4,1 x 3,5 x 5	6, 7
3372	Anatomic healing abutment IC 3,5/4,1 x 3,5 x 7	6, 7
3373	Anatomic healing abutment PEEK IC 3,5/4,1 x 6 x 5	6, 7
3481	Anatomic healing abutment PEEK IC 3,5/4,1 x 8 x 5	6, 7

*The availability of the products in this catalog may vary depending on the country where you are based. Please contact your AVINENT distributor for further information.

AVINENT®

Implant System

Carretera de Navarcles, 107
Pol. Industrial Santa Anna I - Apartado 20
08251 Santpedor (Barcelona) - España
T. (+34) 902 38 38 48 - F. (+34) 93 827 38 73
www.avinent.com - avinent@avinent.com



Management
System
ISO 9001:2008
ISO 13485:2003
www.tuv.com
ID 0000040371



AVINENT AUSTRALIA
australia@avinent.com

AVINENT BENELUX
benelux@avinent.com

AVINENT CANADA
info@avinentcanada.com

AVINENT COLOMBIA
colombia@avinent.com

AVINENT CROATIA
croatia@avinent.com

AVINENT FRANCE
france@avinent.com

AVINENT LITHUANIA
lithuania@avinent.com

AVINENT POLAND
poland@avinent.com

AVINENT PORTUGAL
portugal@avinent.com

AVINENT ROMANIA
romania@avinent.com

AVINENT TAIWAN
taiwan@avinent.com

AVINENT UNITED KINGDOM
uk@avinent.com

AVINENT USA
usa@avinent.com